

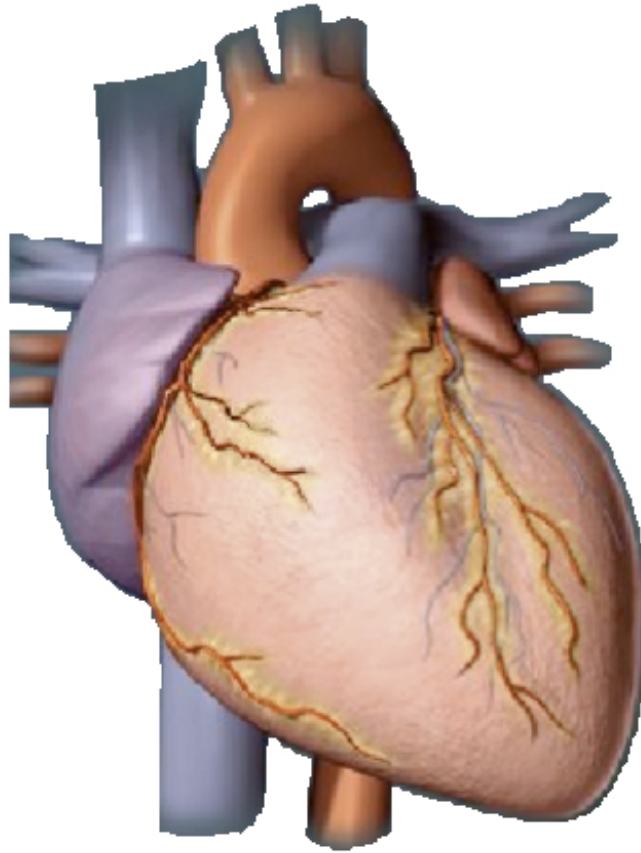
Name _____ Period _____

Use our class web page with this document – Links are there

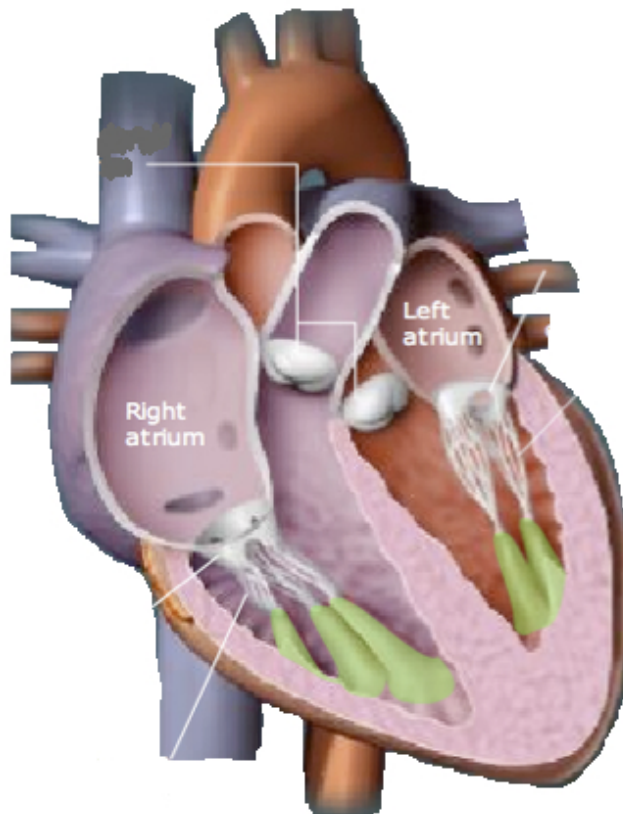
<http://bio-animations.blogspot.com/2008/04/heart-anatomy-and-structure.html>

THE HEART: Use this site to explore the features of the exterior and interior heart. Identify the location & purpose of the features listed.

Exterior



Interior



Name _____ Period _____

Use our class web page with this document – Links are there

<http://www.pbs.org/wgbh/nova/heart/>

1. Map of the Human Heart (Hot Science)

a. How does the blood flow through the heart?

b. Read through the *Amazing Heart Facts* link at the bottom of the page. Which facts do you find interesting? Why?

2. Troubled Hearts

a. As you explore pictures of diseased hearts, which do you find surprising? Why?

Blood

http://www.e-learningforkids.org/Courses/Liquid_Animation/Body_Parts/Blood/index.html

Explore components of blood and interesting facts about blood. Take notes on the components.

Heart & Circulation

http://www.e-learningforkids.org/Courses/Liquid_Animation/Body_Parts/Heart_and_Circulation/index.html

Good animations of the heart and circulation of blood.

Name _____ Period _____

Use our class web page with this document – Links are there

Choose at least 2 of the following links to explore. Indicate which ones you looked at

Heart Sounds

http://www.mhhe.com/biosci/esp/2002_general/Esp/folder_structure/tr/m2/s6/index.htm

Study the animation to see how the two heart sounds are made.

Electrical conduction

http://msjensen.cehd.umn.edu/1135/Links/Animations/Flash/0027-swf_conducting_sys.swf

Study the animation to see how the heart coordinates the nerve impulses to have the greatest impact on contractons.

Compare Diastole and Systole

http://msjensen.cehd.umn.edu/1135/Links/Animations/Flash/0028-swf_the_cardiac_cycle.swf

Watch blood move thorough the heart and the valves open and close.

Blood Flow through the Human Heart

http://www.sumanasinc.com/webcontent/animations/content/human_heart.html

Watch blood move thorough the heart and the valves open and close.

Test your knowledge

External Anatomy of the Heart

http://media.pearsoncmg.com/bc/bc_marieb_ehap_8/activities/chapter11/Act11A.html

Did you get it right the first time?

Frontal Section of the Heart

http://media.pearsoncmg.com/bc/bc_marieb_ehap_8/activities/chapter11/Act11B.html

Did you get it right the first time?

Heart Surgery

<http://www.abc.net.au/science/lcs/swf/heart.swf>

Perform a virtual open heart coronary bypass operation. Can you do better than Ms. Barge?

Name _____ Period _____

Use our class web page with this document - Links are there

