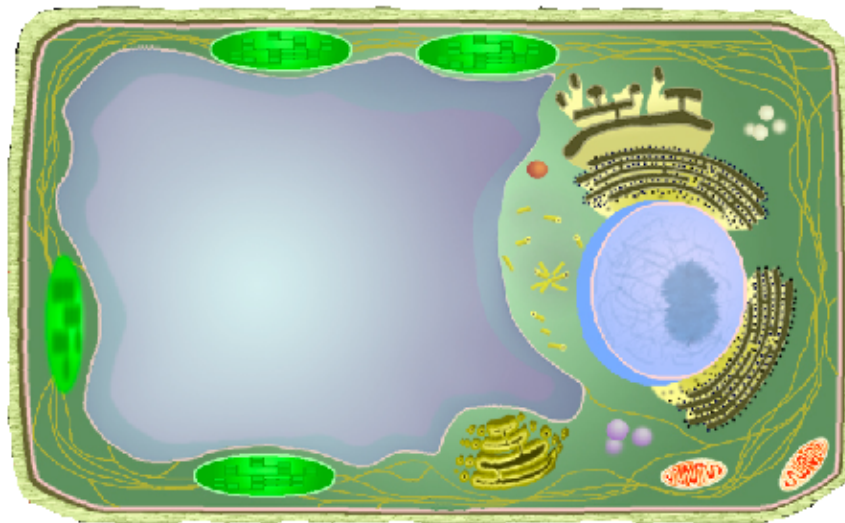
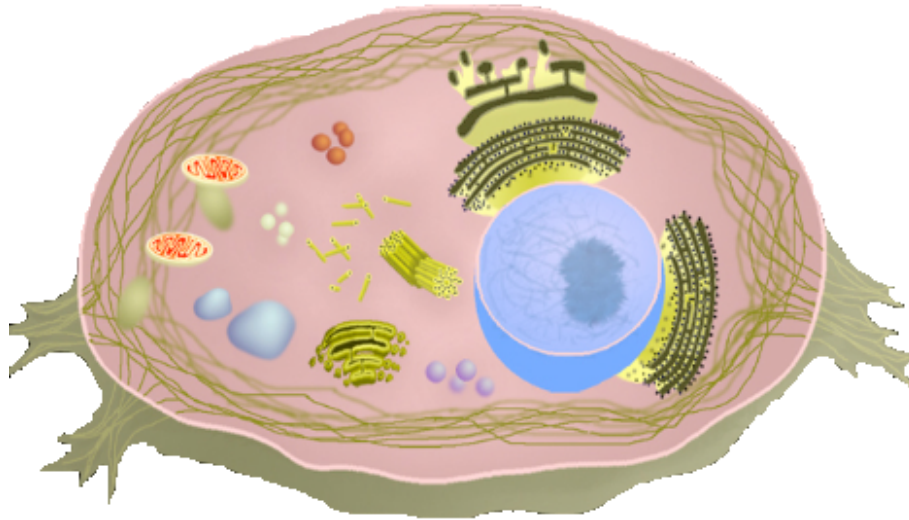


Name \_\_\_\_\_

# Cells

Use the *Cells Alive* website to identify the organelles in the plant and animal cells below.

<http://40two.info/barge/bio/cells.html>



## **Eucaryotic Cell Organelles**

Use the Cells Alive website to describe the organelles in the plant and animal cells below.

**Nucleus:**

**Nucleolus:**

**Cytosol:**

**Cytoplasm:**

**Centrosome:**

**Centriole:**

**Golgi:**

**Lysosome:**

**Peroxisome:**

**Secretory Vesicle:**

**Cell Membrane:**

**Mitochondria:**

**Vacuole:**

**Cell Wall:**

**Chloroplast:**

**Smooth Endoplasmic Reticulum:**

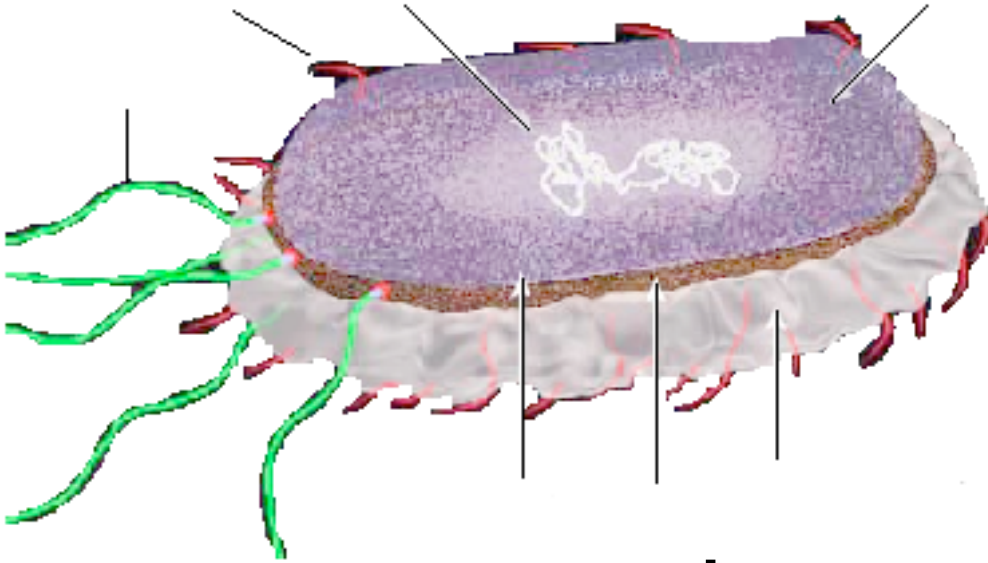
**Rough Endoplasmic Reticulum:**

**Ribosomes:**

**Cytoskeleton:**

## Prokaryotic Cells

Use the Cells Alive website to identify and describe the organelles in the bacterial cell below.



### Internal Structure:

Nucleoid:

Ribosomes:

Storage granules:

### Appendages:

Pili

Flagella

### Surface Structure:

Capsule:

Outer membrane:

Cell wall:

Periplasmic space:

Plasma membrane:

Visit the [Cell Structure Interactive](#) link to review cell organelles & try to construct a cell