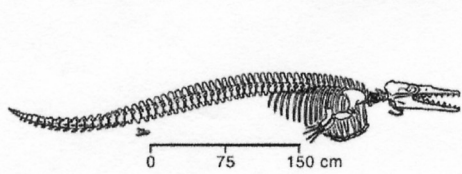
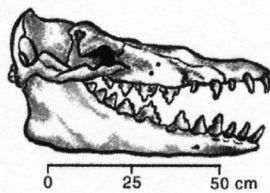


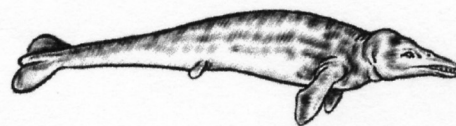
WHALES IN THE MAKING



a

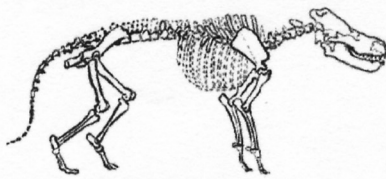


b

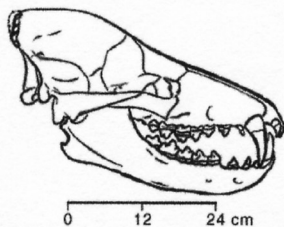


c

1. Archaeocetes (primitive whales, e.g.: *Dorudon*, *Prozeuglodon*)



a

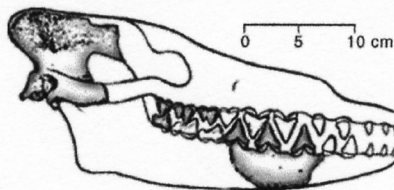
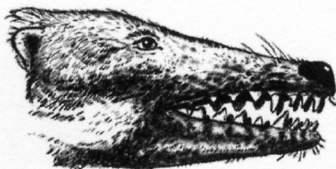


b



c

2. Mesonychids (extinct land mammals, with whale-like teeth, e.g. *Pachyaena*, *Sinonyx*,)

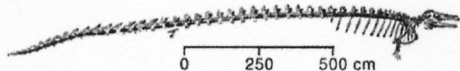


b

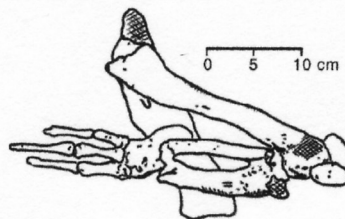


c

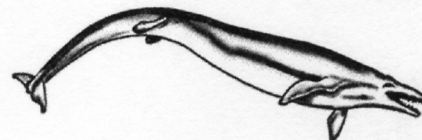
3. (1983) *Pakicetus inachus* (skull and teeth only)



a

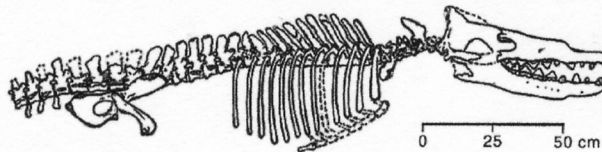


b



c

4. (1990) *Basilosaurus isis* (hind leg found)

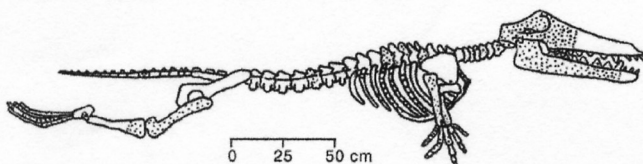


a

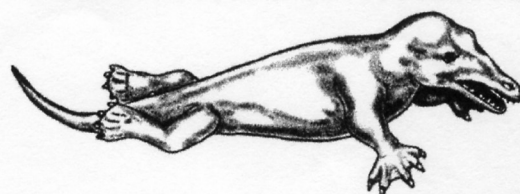


b

5. (1994) *Rodhocetus kasrani*



a



b

6. (1994) *Ambulocetus natans*