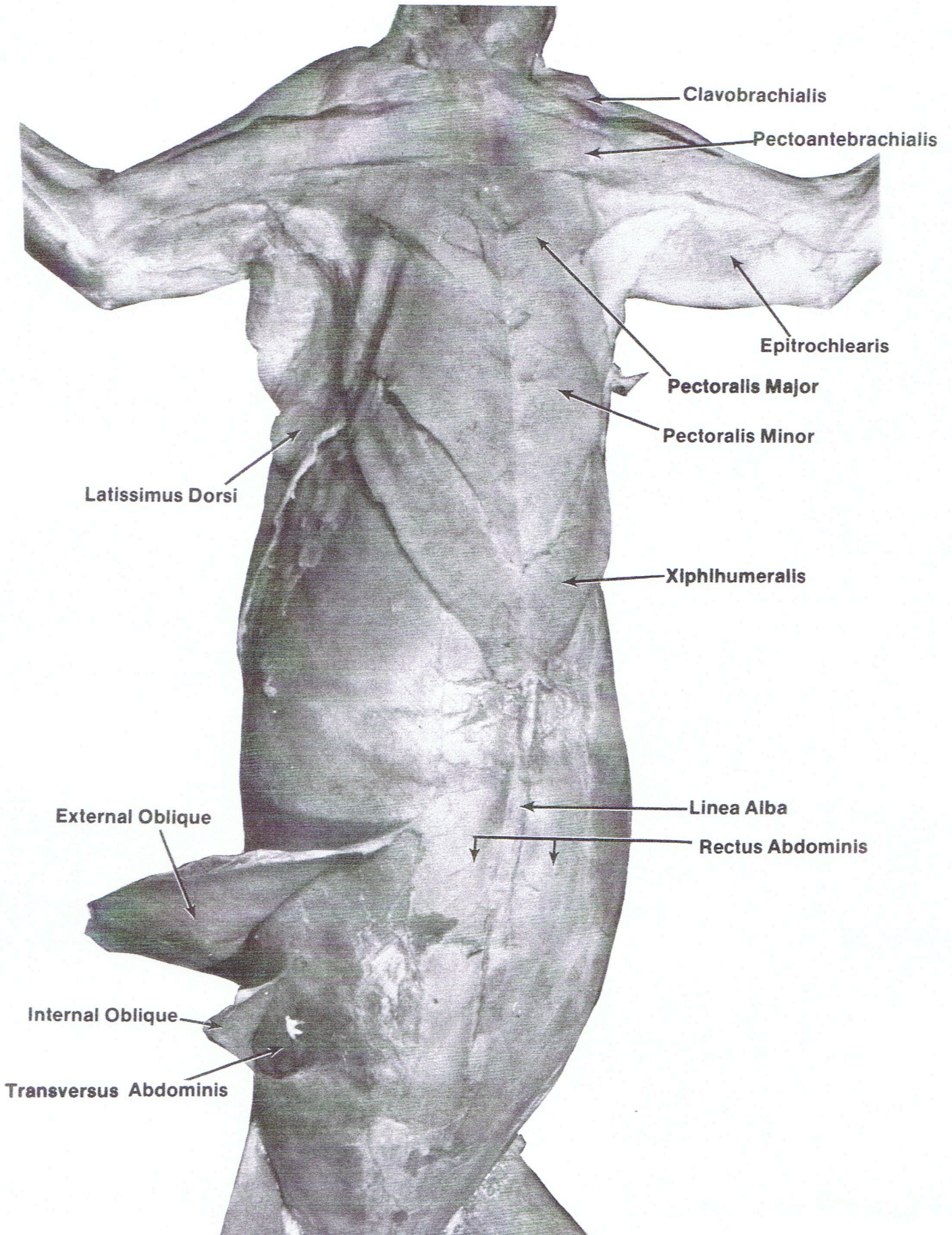
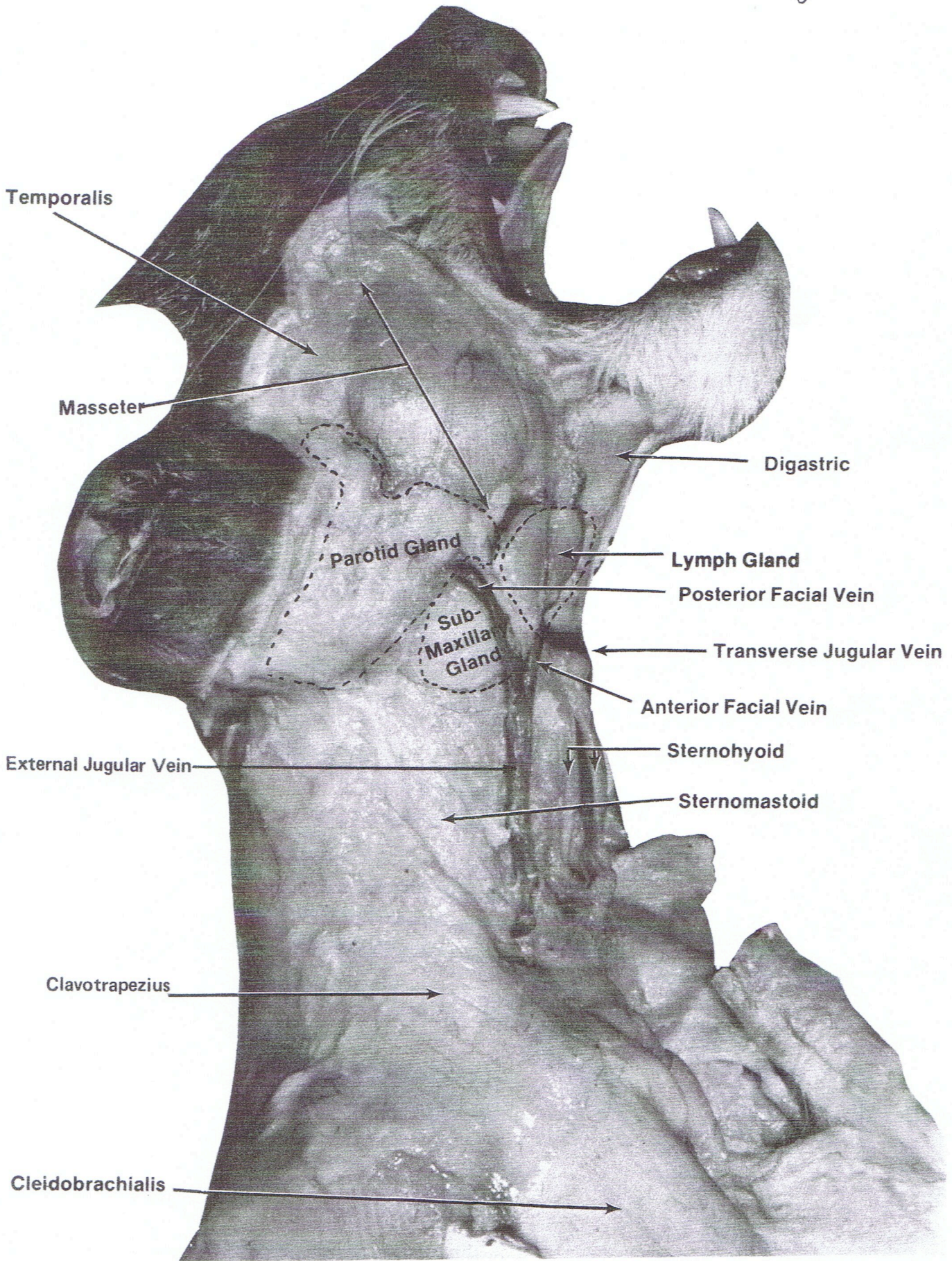


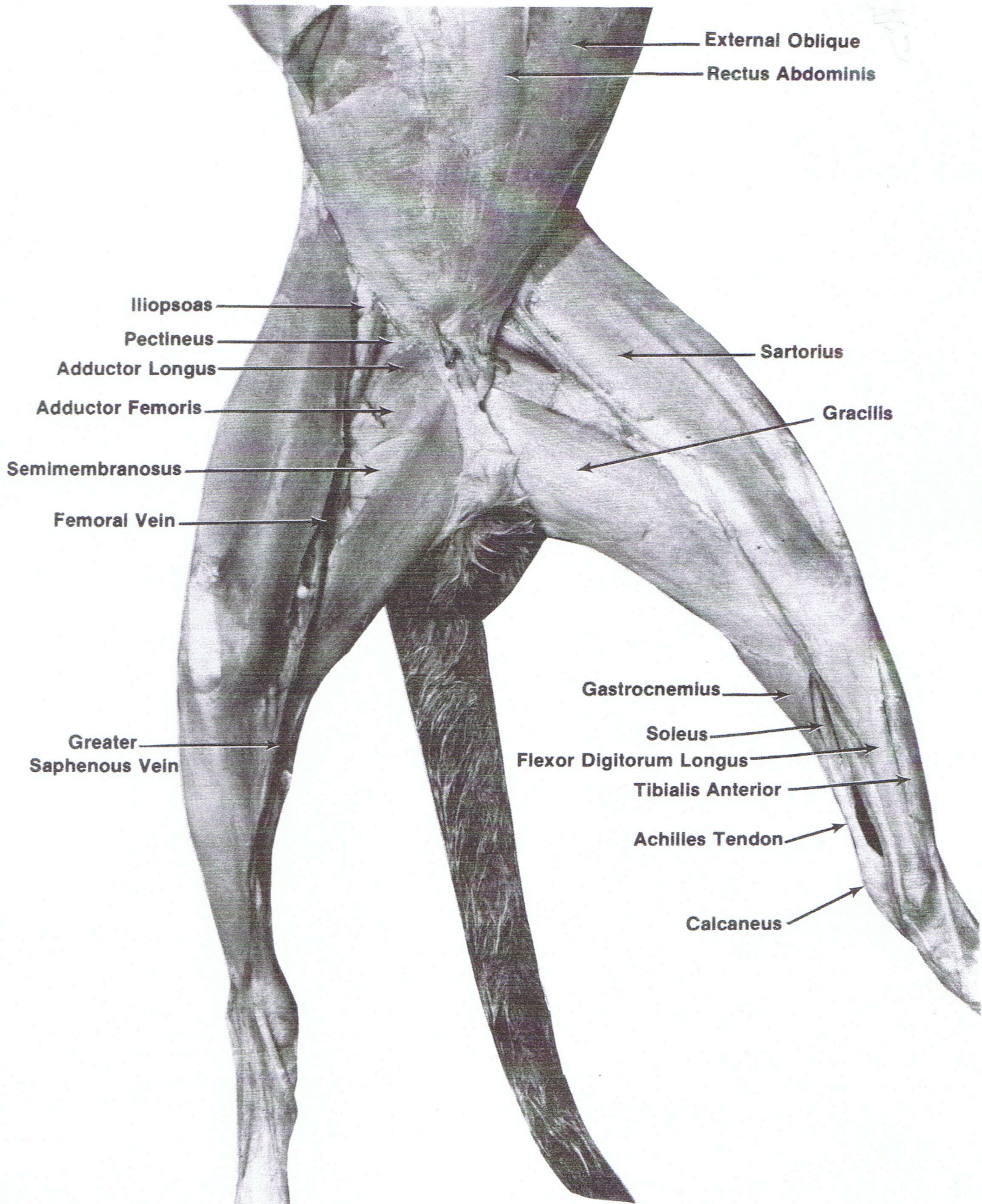
BEGINNING THE DISSECTION - REMOVAL OF SKIN



SUPERFICIAL MUSCLES - THORAX AND ABDOMEN

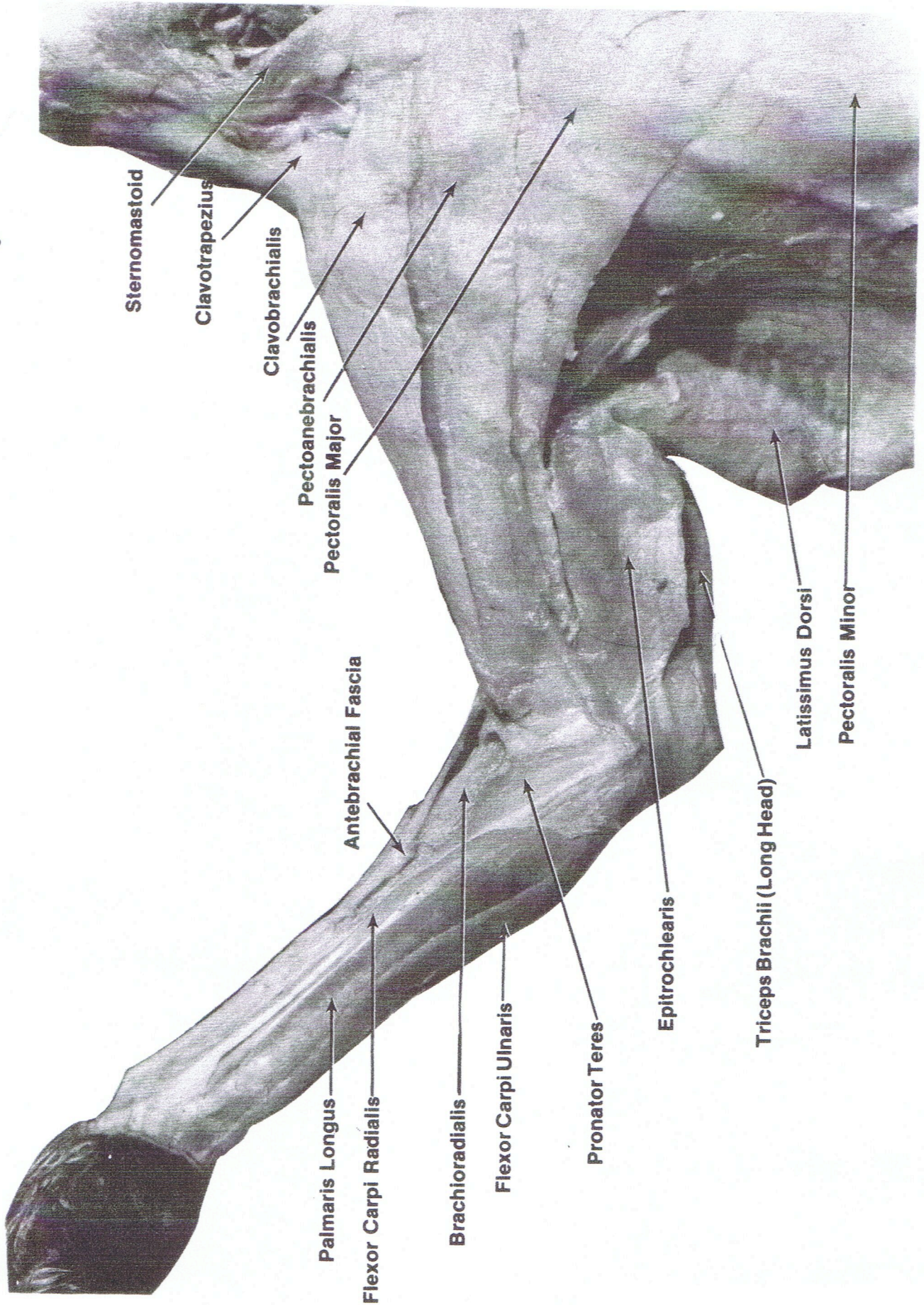


SUPERFICIAL MUSCLES - HEAD, LATERAL VIEW

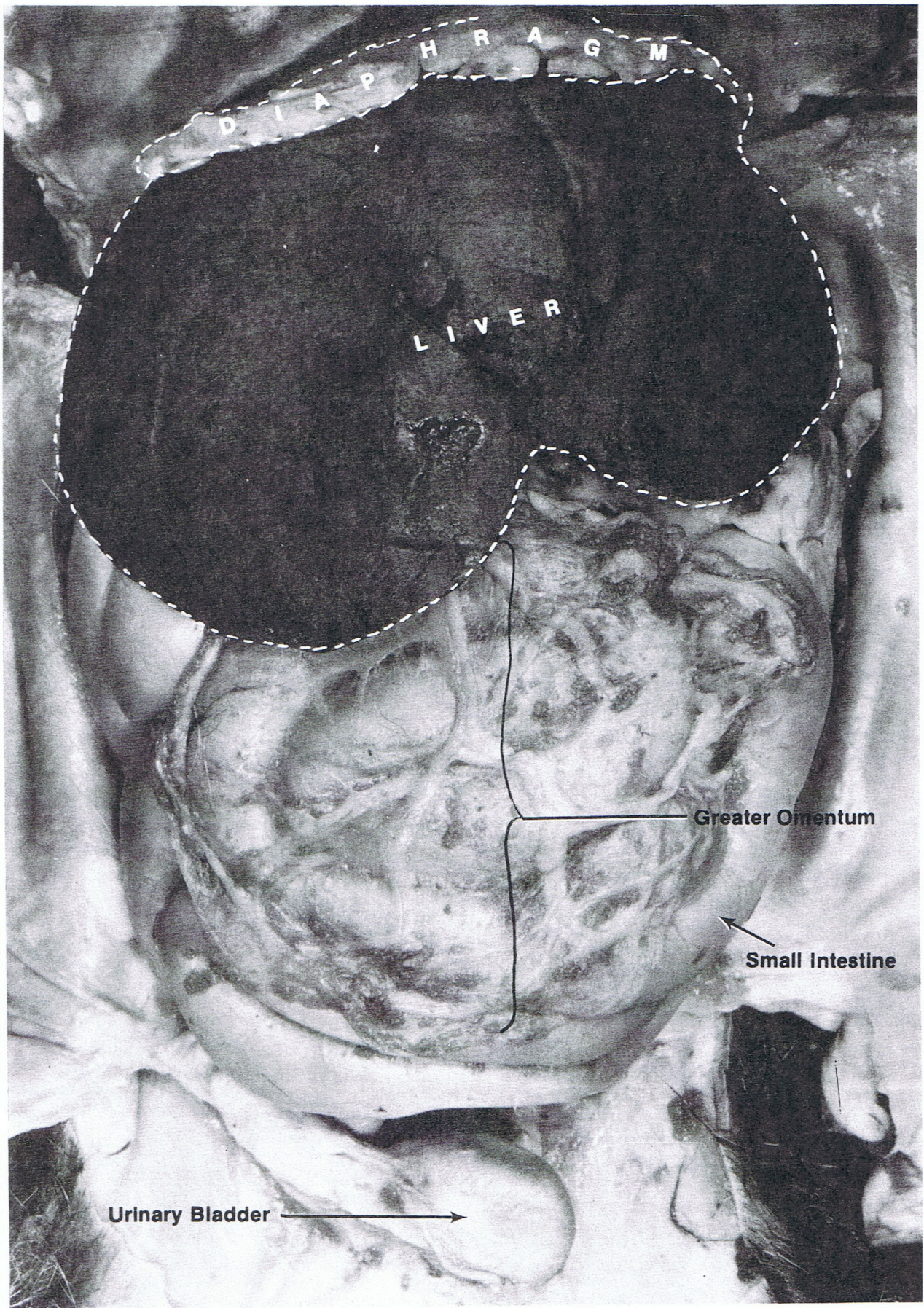


SUPERFICIAL MUSCLES - HIND LIMB, MEDIAL VIEW

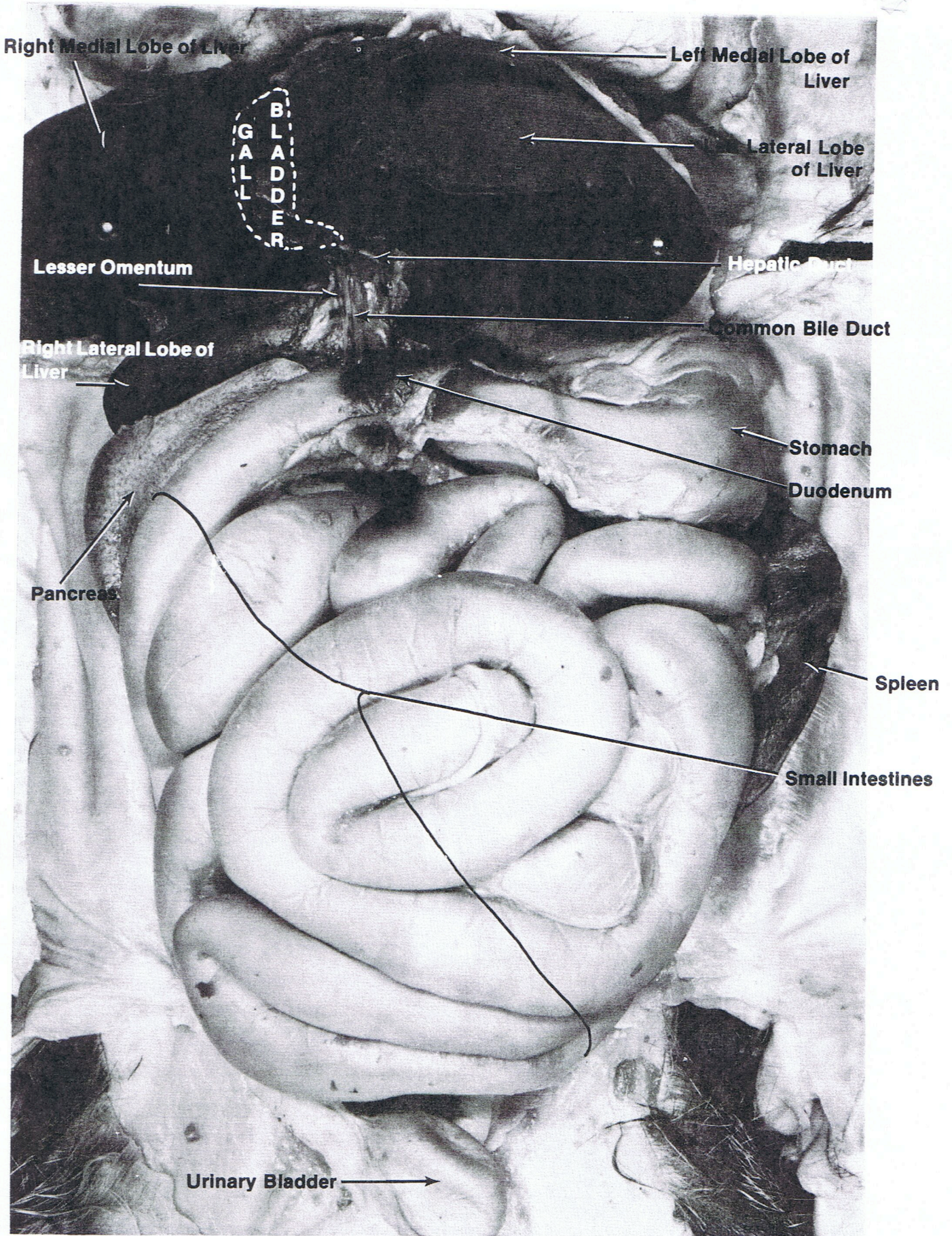
Diagram #5



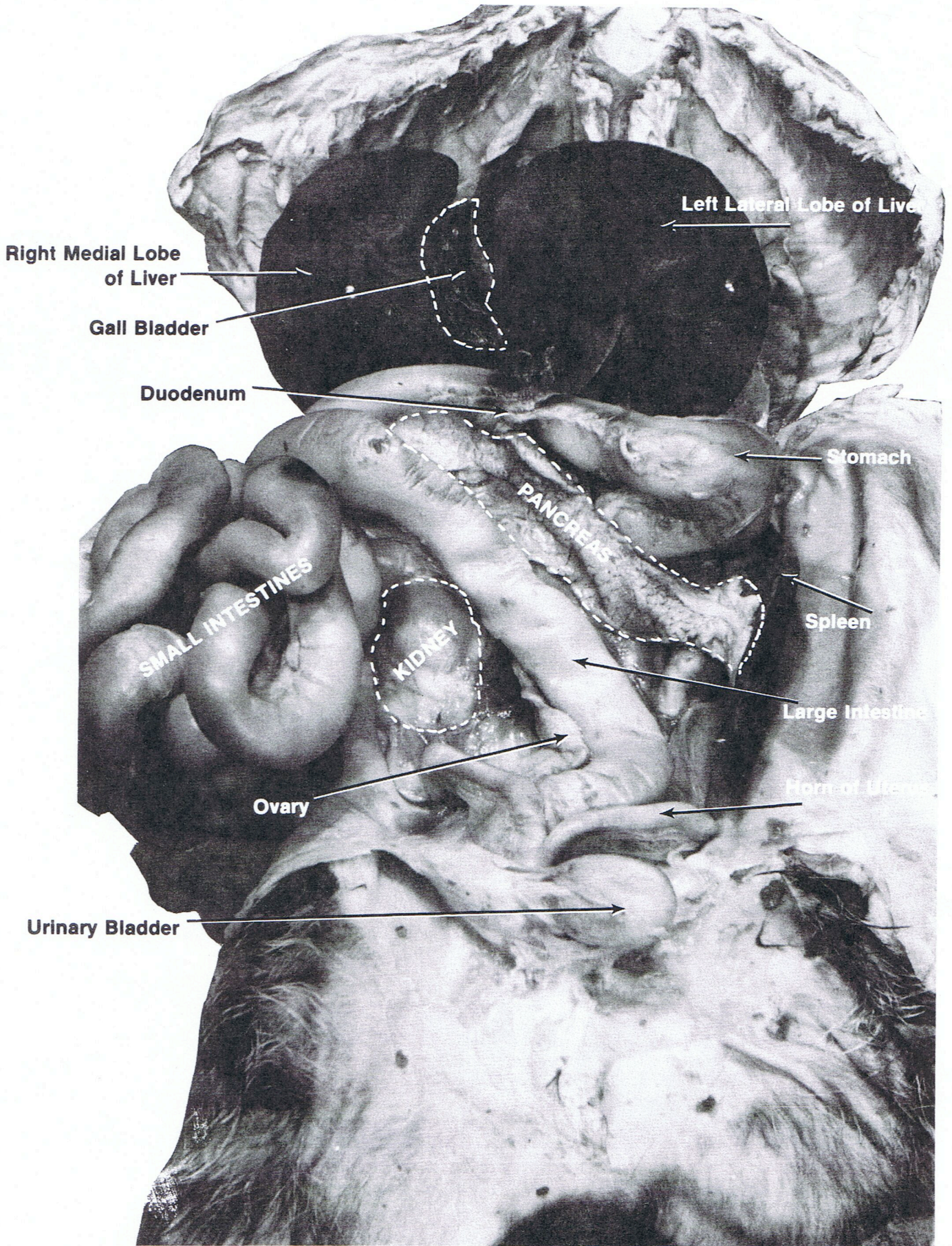
SUPERFICIAL MUSCLES - FORELIMB, MEDIAL VIEW



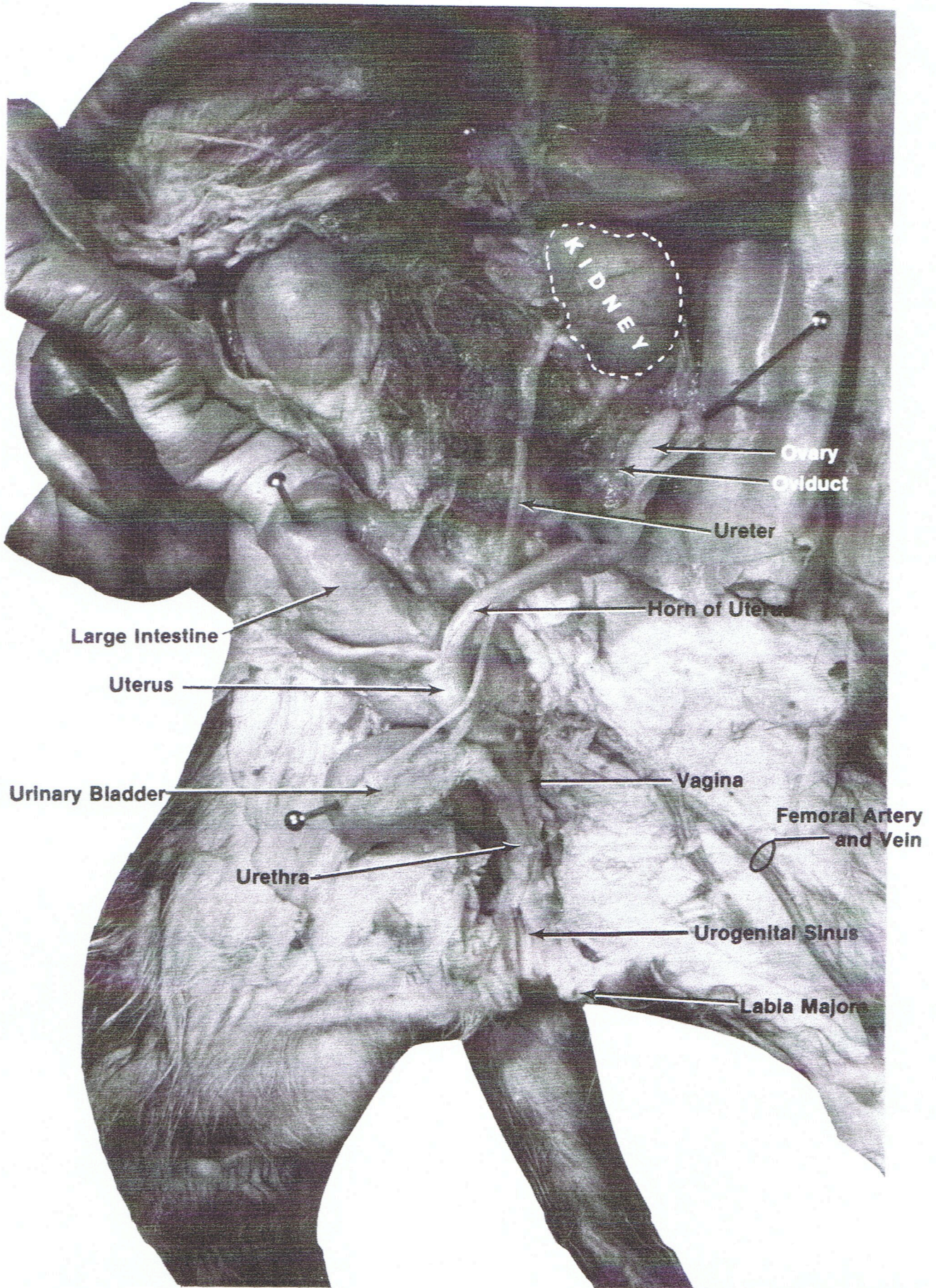
THE ABDOMINAL CAVITY (INTACT)



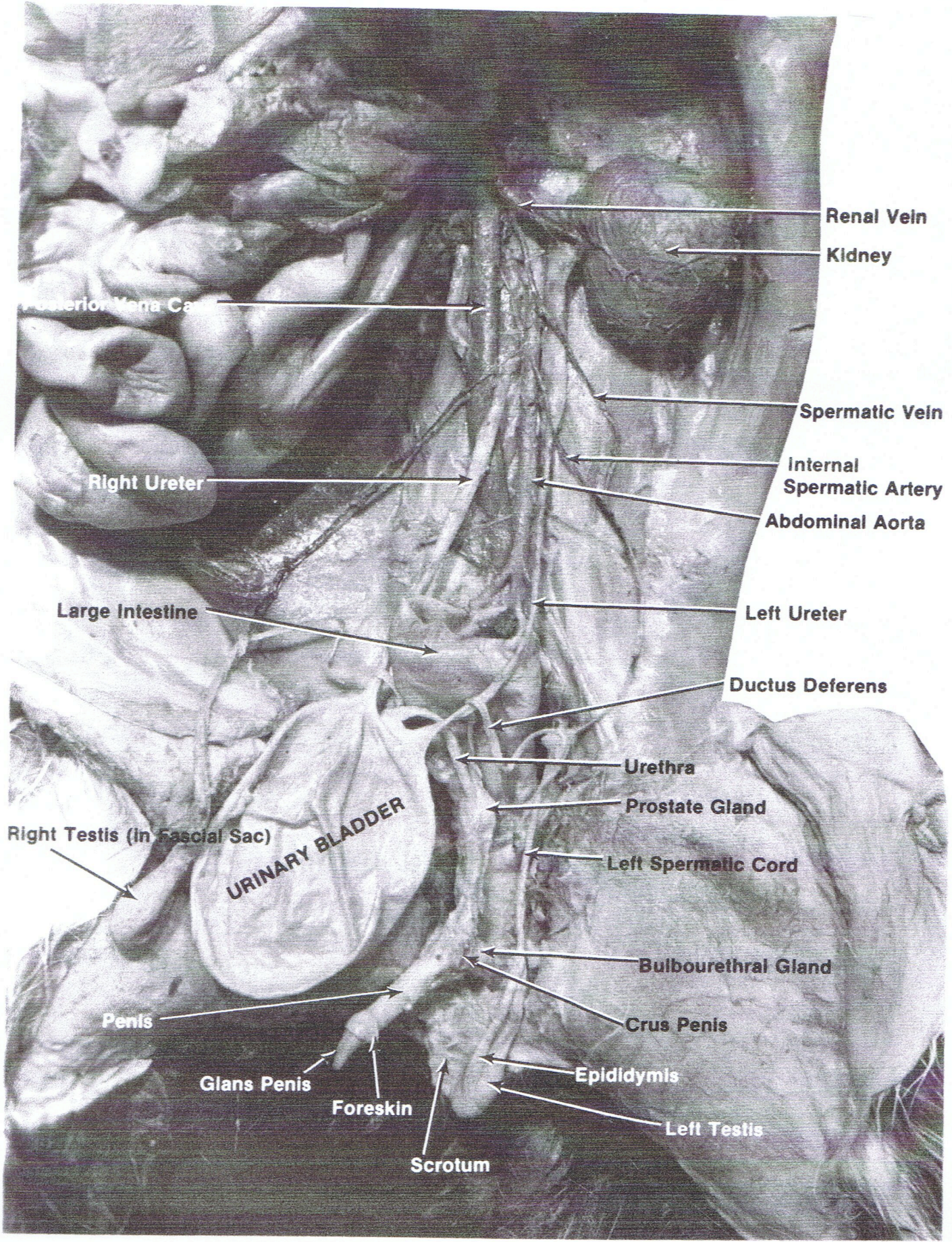
THE ABDOMINAL CAVITY (GREATER OMENTUM REMOVED)



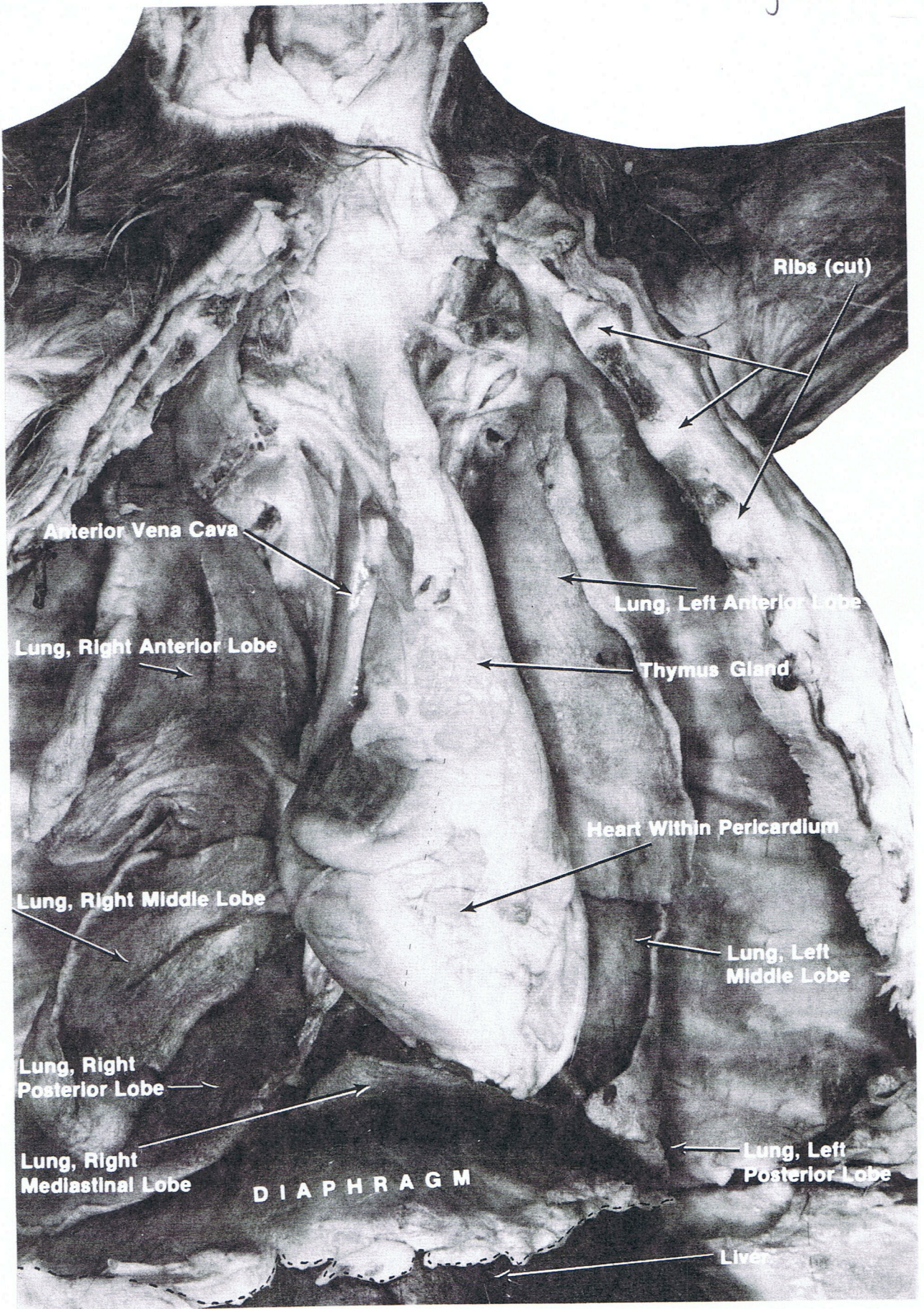
THE ABDOMINAL CAVITY (INTESTINES ASIDE)



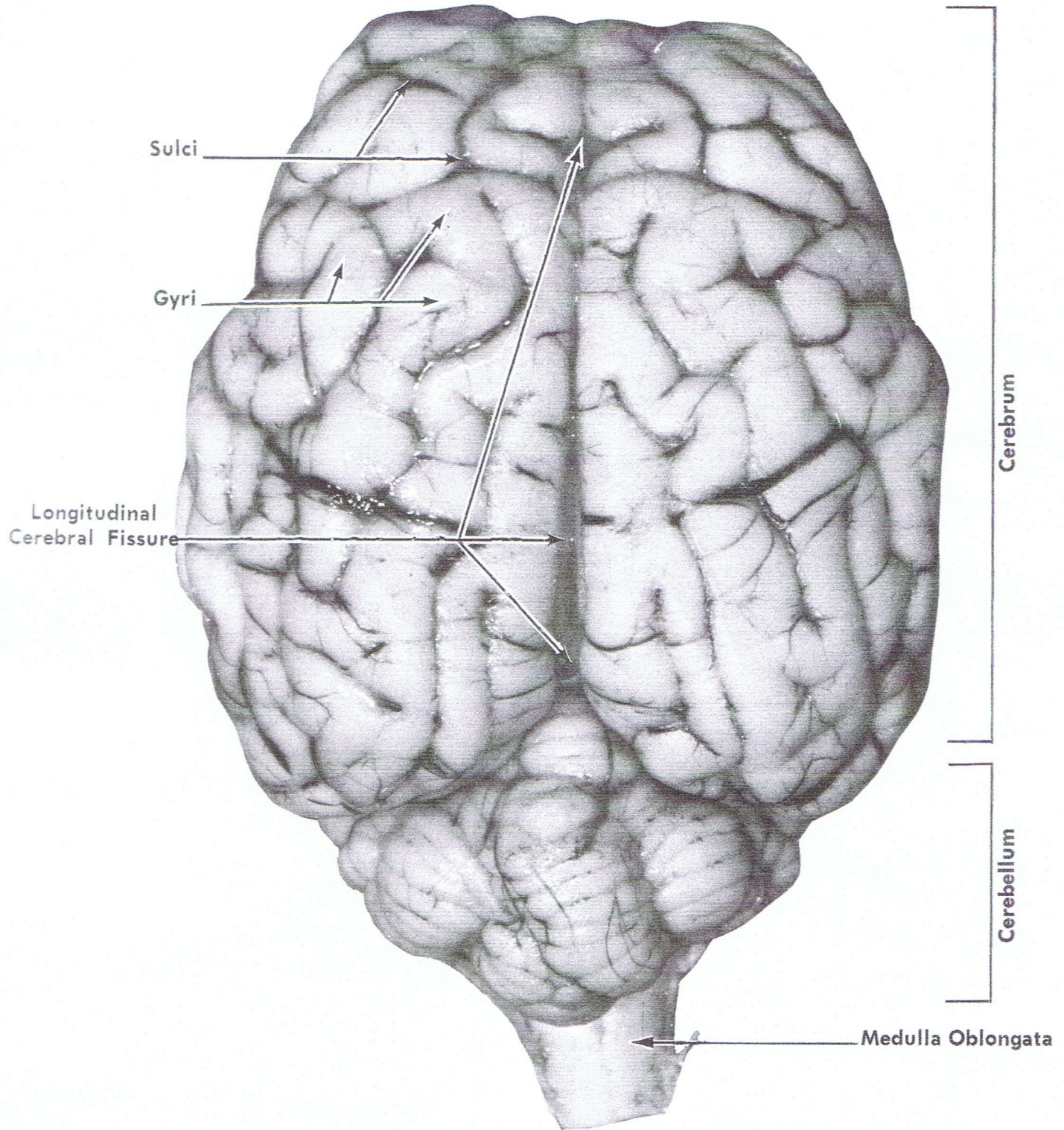
THE UROGENITAL SYSTEM - FEMALE



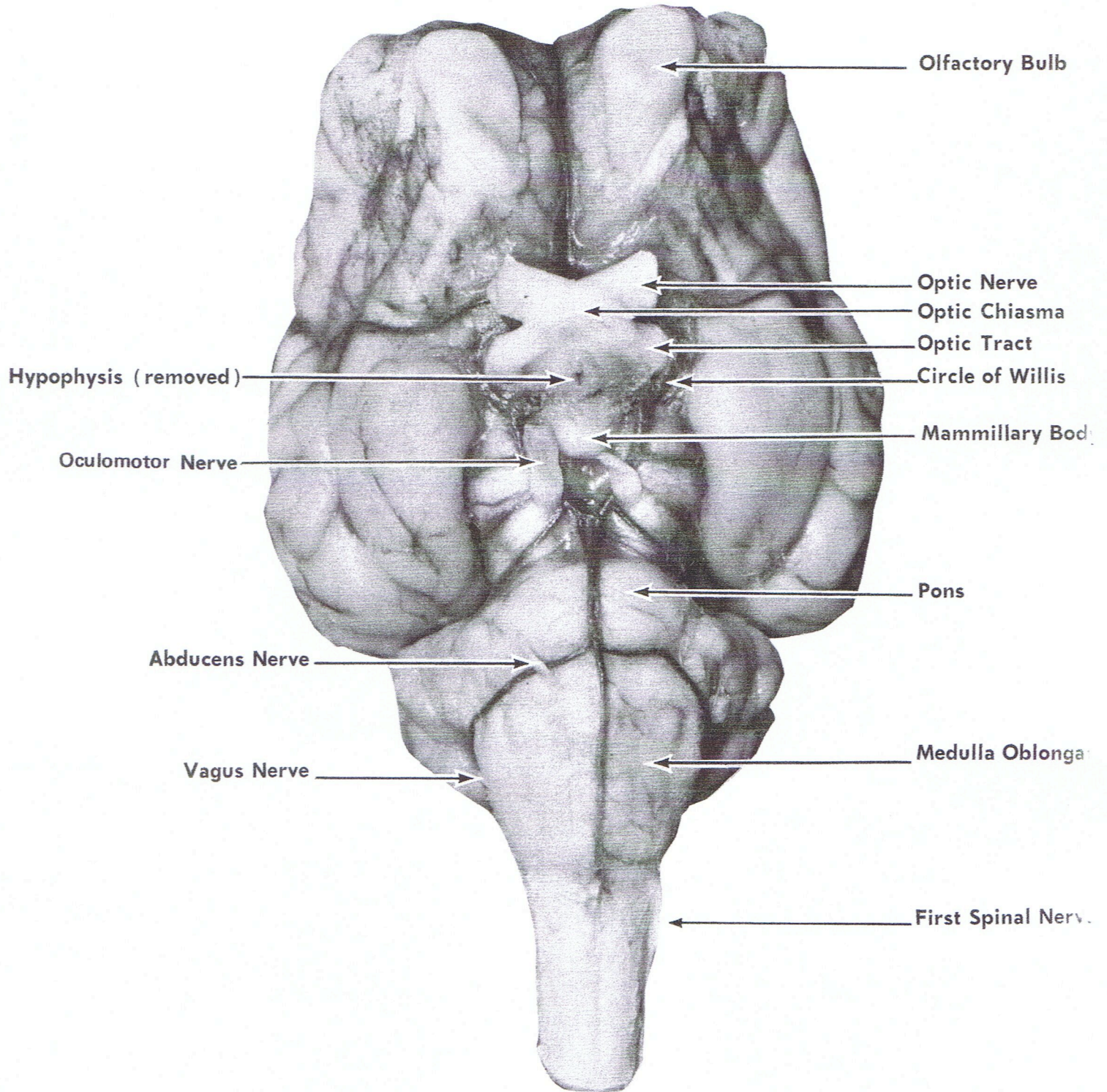
THE UROGENITAL SYSTEM - MALE



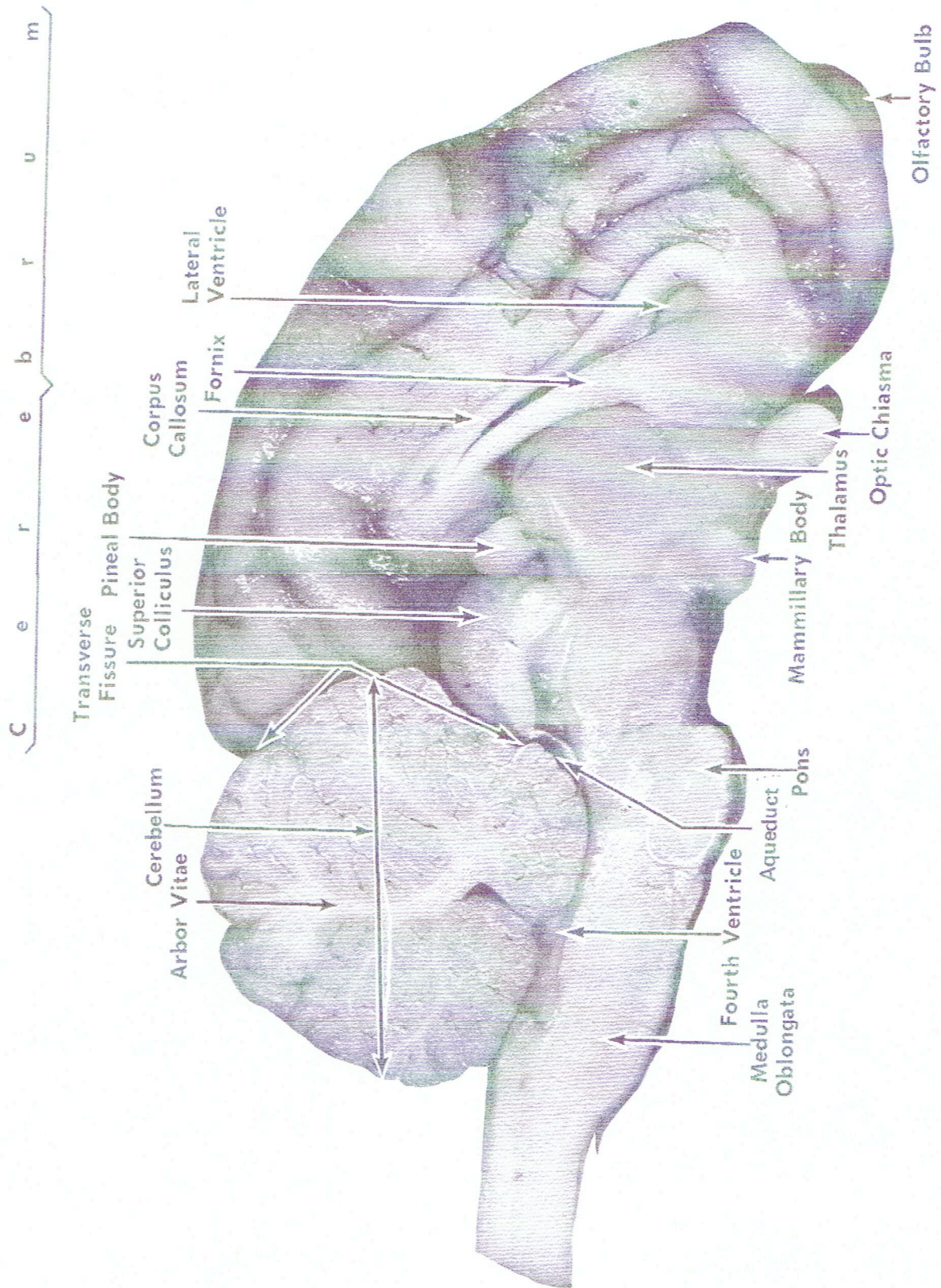
THE THORACIC CAVITY



SHEEP BRAIN (Dorsal View)



SHEEP BRAIN, VENTRAL VIEW



SHEEP BRAIN, SAGITTAL VIEW