

Be able to identify these bones on a skeleton (40 types)

Skull (17 types)

Cranial Bones

Parietal (2), Temporal (2), Frontal (1), Occipital (1), Ethmoid (1), Sphenoid (1)

Facial Bones

Maxilla (2), Zygomatic (2), Mandible (1), Nasal (2), Platine (2),

Inferior nasal concha (2), Lacrimal (2), Vomer (1)

Auditory Ossicles

Malleus (2), Incus (2), Stapes (2)

Vetebral Column (5 types)

Cervical vertebrae (7), Thoracic vertebrae (12), Lumbar vertebrae (5), Sacrum (1), coccyx (1)

Thoracic Cage (2 types)

Sternum (1), Ribs (24)

Pectoral Girdles (2 types)

Clavicle (2), Scapula (2)

Upper Extremity (6 types)

Humerus (2), Radius (2), Ulna (2), Carpals (16), Metacarpals (10), Phalanges (28)

Pelvic Girdle (1 type)

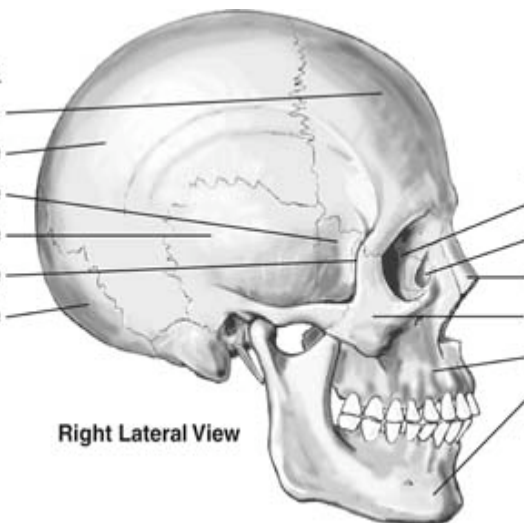
Coxal (2)

Lower Extremity (7 types)

Femur (2), Tibia (2), Fibula (2), Patella (2), Tarsals (14), Metatarsals (10), Phalanges (28)

Cranial Bones

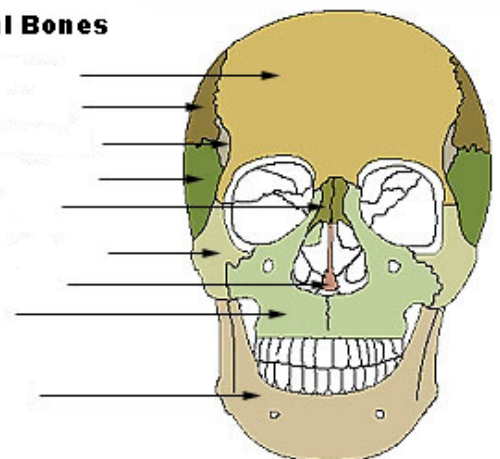
bone  
bone  
bone  
bone  
bone



Facial Bones

bone  
bone  
bone  
bone

**Facial Bones**



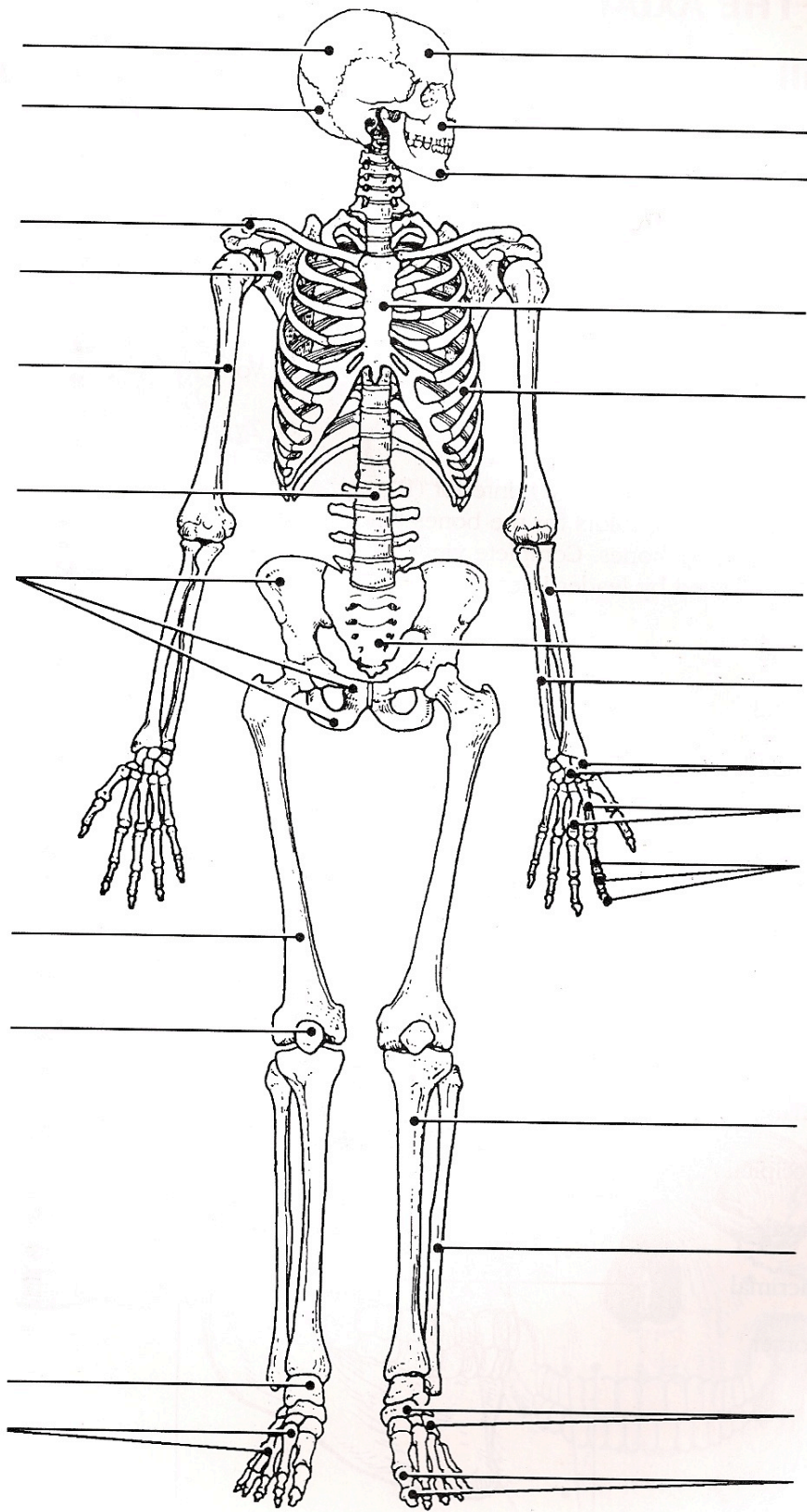


Figure 7.1