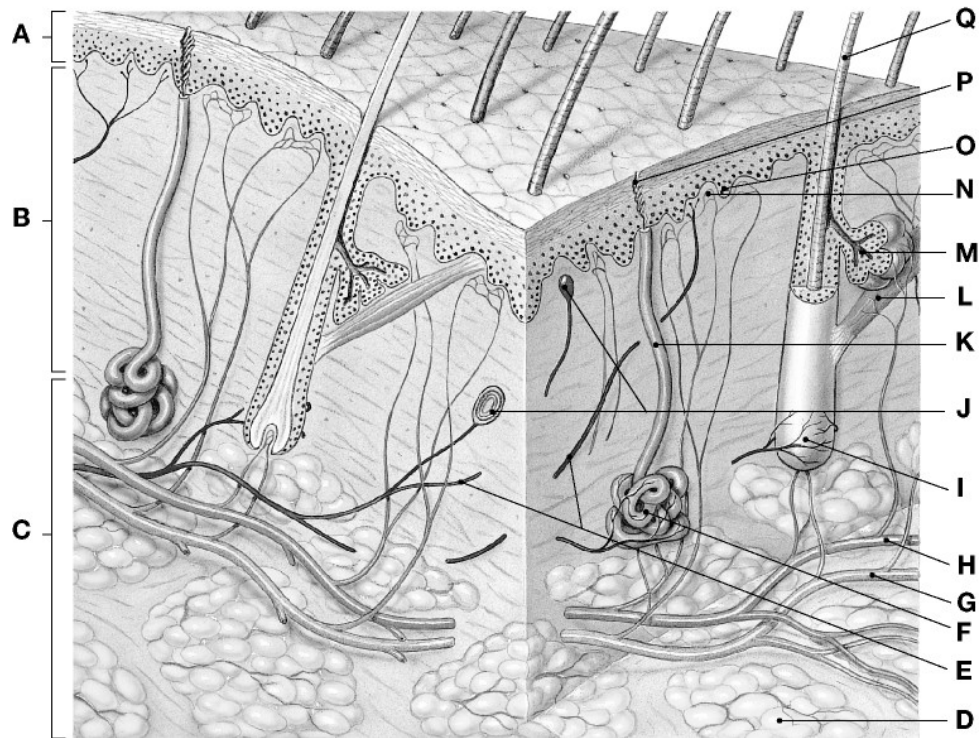


1. Can you identify the following parts of skin?

Figure 5-1 The Components of the Integumentary System



2. What are the five main functions of the skin?

3. Describe the major characteristics of each A, B and C in the diagram above.

4. What is keratin?

5. Skin color is dependent on pigmentation in the epidermis and the blood supply in the dermis.

What are the two pigments and where do they come from?

What are melanocytes?

How does UV light affect the epidermis? [vitamin D production (what, where) and too much UV exposure]

How do blood vessels in the dermis affect a person's coloring?

What is cyanosis?

6. What is the difference between basal cell carcinoma and squamous cell carcinoma and melanoma [where do they originate; metastasis; severity]?

7. Besides being the place where blood vessels are located, the dermis has two components with distinct properties. What are the two layers of the dermis and what is located in each region?

8. The subcutaneous layer is not really part of the skin. Why is it important to skin?

9. Could you draw a diagram of a hair follicle and identify the following components?

1. Hair papilla, 2. Hair shaft, 3. Cortex, 4. Medulla, 5. arrector pili muscle,
6. sebaceous gland, 7. connective tissue sheath (or boundary) of hair follicle

9. What are the functions of hair?

10. What causes hair color?

11. Why is it impossible for hair to turn white overnight?

12. What is a sebaceous gland? Where is it? What does it do?

13. There are two types of sweat glands. They secrete their products in different places on the skin. One secretes a sticky, cloudy secretion while the other secretes primarily water. One can be a mode of communication (pheromones) and the other regulates body temperature. One has a displeasing odor. Complete the chart below.

Type of sweat gland (name)	Location on skin where product is secreted	Type of secretion	Function of secretion

14. What causes body odor [smelly sweat]?

15. Nails form on the surfaces of fingers and toes. Can you describe the following parts of a nail and identify them on a diagram? Try drawing a diagram of a nail.

1. nail body; 2. Nail bed; 3. Nail root; 4. Cuticle; 5. Lunula [the crescent]