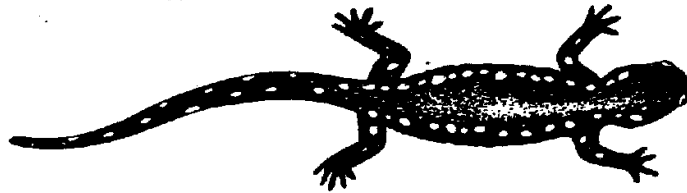


1 _____



2 _____



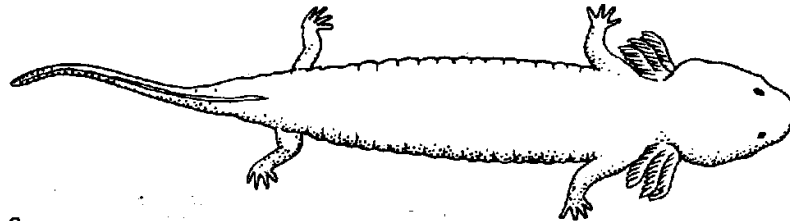
3 _____



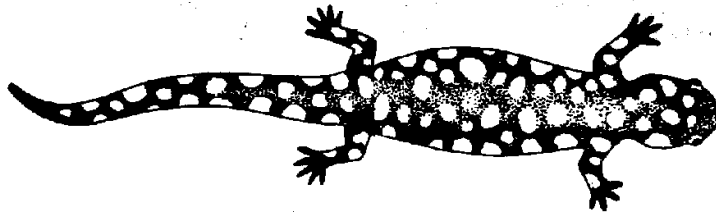
4 _____



5 _____



6 _____



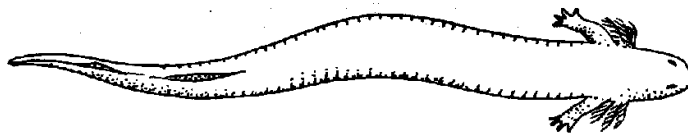
7 _____



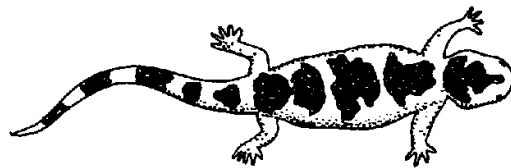
8 _____



9 _____



10 _____



11 _____

Key to the Salamanders:

1	a	Hind limbs absent	<i>Siren</i>
	b	Hind limbs present	Go to 2
2	a	External gills present in adults	<i>Mud puppy</i>
	b	External gills absent in adults	Go to 3
3	a	Large size (over 7 cm long)	Go to 4
	b	Small size (under 7 cm long)	Go to 5
4	a	Body background black, large white spots irregular in shape and size completely covering body & tail	<i>Tiger salamander</i>
	b	Body background black, small, round, white spots in a row along each side from eye to tip of tail	<i>Spotted Salamander</i>
5	a	Body background black with white spots	Go to 6
	b	Body background light color with dark spots and or lines on body	Go to 7
6	a	Small white spots on a black background in a row along each side from head to tip of tail	<i>Jefferson salamander</i>
	b	Small white spots on a scattered throughout a black background from head to tip of tail	<i>Slimy salamander</i>
7	a	Large irregular black spots on a light background extending from head to tip of tail	<i>Marbled salamander</i>
	b	No large irregular black spots on a light background	Go to 8
8	a	Round spots scattered along back and sides of body, tail flattened like a tadpole	<i>Newt</i>
	b	Without round spots and tail not flattened like a tadpole	Go to 9
9	a	Two dark lines bordering a broad, light mid-dorsal stripe with a narrow median dark line extending from the head onto the tail	<i>Two-lined salamander</i>
	b	Without two dark lines running the length of the body	Go to 10
10	a	A light stripe running the length of the body and bordered by dark pigment extending downward on the sides	<i>Red-backed salamander</i>
	b	A light stripe extending the length of the body, a marked constriction at the base of the tail	<i>Four-toed salamander</i>